



element HT5

Veterinary Hematology Analyzer

True 5-part: laser + impedance + colourimetric hematology

Three discrete measurement channels combine to provide a true 5-part differential, with White Blood Cell, Red Blood Cell and Platelet parameter results from just a 15uL sample. In only 60 seconds get results you can trust, with laser flow cytometry, impedance counts and colourimetric detection technologies to detect not only white blood cell volume, but complexity and granularity obtained by a triple angle laser scatter. While accurate and fast, the Element HT5 remains very simple to use with a large colour touch screen, intuitive navigation, simplified data entry and easy reagent management.

Results in under 60 seconds

Five-part Laser & Impedance

Profitable - low cost per test

Very Small Sample Size

Intuitive Touchscreen Interface



HESKA
AN ANTECH® COMPANY

Combined Technologies

Very Small Sample Size

Counting Channels	Technology	Parameters
1 Diff Channel	Flow Cytometry	LYM, MON, NEU, EOS
2 RBC/PLT Channel	Impedance	RBC/PLT
3 Baso/HGB Channel	Colourimetry	BAS, WBC, HGB



Features:

HT5

20 Test Parameters

Consolidated Results and Reporting

Combine results using the Heskaview Connect program or transmit to your PMS. Rapidly retrieve patient worklist with bi-directional communication.

Easy Reagent Management

Manage reagents via bar-code scanner and on-board menu functions. Internal reagent storage saves space and reduces clutter.

Multi-Species Availability

Dog, Cat, Horse, Cow, Ferret, Goat, Llama, Monkey, Mouse, Giant Panda, Red Panda, Pig, Rabbit, Rat and Sheep.

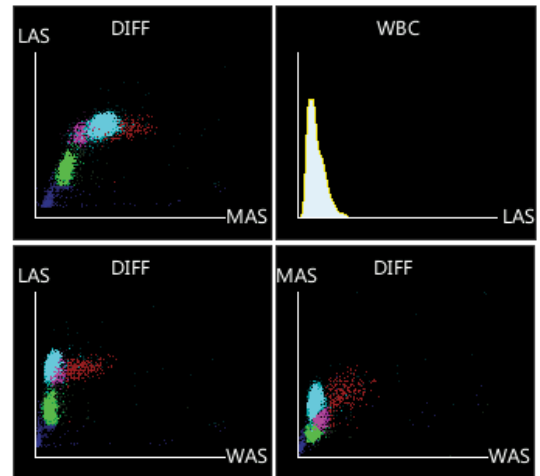
Intuitive Navigation

Simplified data entry and patient test review with numeric results, histograms and scatter plots.

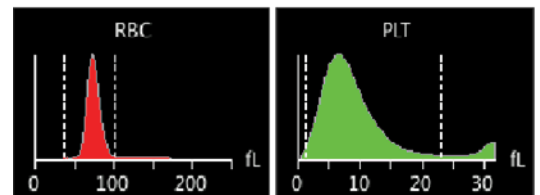


White Blood Cell	Red Blood Cell
Total White Blood Cell (WBC)	Total Red Blood Cell (RBC)
Neutrophil Number (NEU#)	Hemoglobin (HGB)
Neutrophil Percent (NEU%)	Hematocrit (HCT)
Lymphocyte Number (LYM#)	Mean Cell Volume (MCV)
Lymphocyte Percent (LYM%)	Mean Cell Hemoglobin (MCH)
Monocyte Number (MON#)	Mean Cell Hemoglobin Conc. (MCHC)
Monocyte Percent (MON%)	Red Blood Cell Distribution (RDW-CV)
Eosinophil Number (EOS#)	
Eosinophil Percent (EOS%)	Platelet
Basophil Number (BAS#)	Total Platelet (PLT)
Basophil Percent (BAS%)	Mean Platelet Volume (MPV)

WBC Scatter Plots & Histograms



RBC /PLT Histograms



Results and Reporting

Easy to Use:

- Web-style links for simple navigation.

Simple Data Management:

- Rapidly retrieve trending data from patient record.

Efficient:

- Assign, unassign or delete multiple items at once.
- Species-specific reference ranges and colour-coded flags make it easy to quickly evaluate patient data.

www.heskavet.ca +1.866.382.6937

©2024 Heska Corporation. All Rights Reserved. Antech, the Antech logo, and all other trademarks used herein are the registered trademarks of Antech Diagnostics, Inc. or its affiliates. Specifications and appearance may be changed without notice. HESKA and Element HT5 and are registered trademarks and Heskaview Connect is a trademark of Heska Corporation. CA20LT0608_002



HESKA
AN ANTECH COMPANY